

Views of
Newbridge Works

Pontypridd

1905.

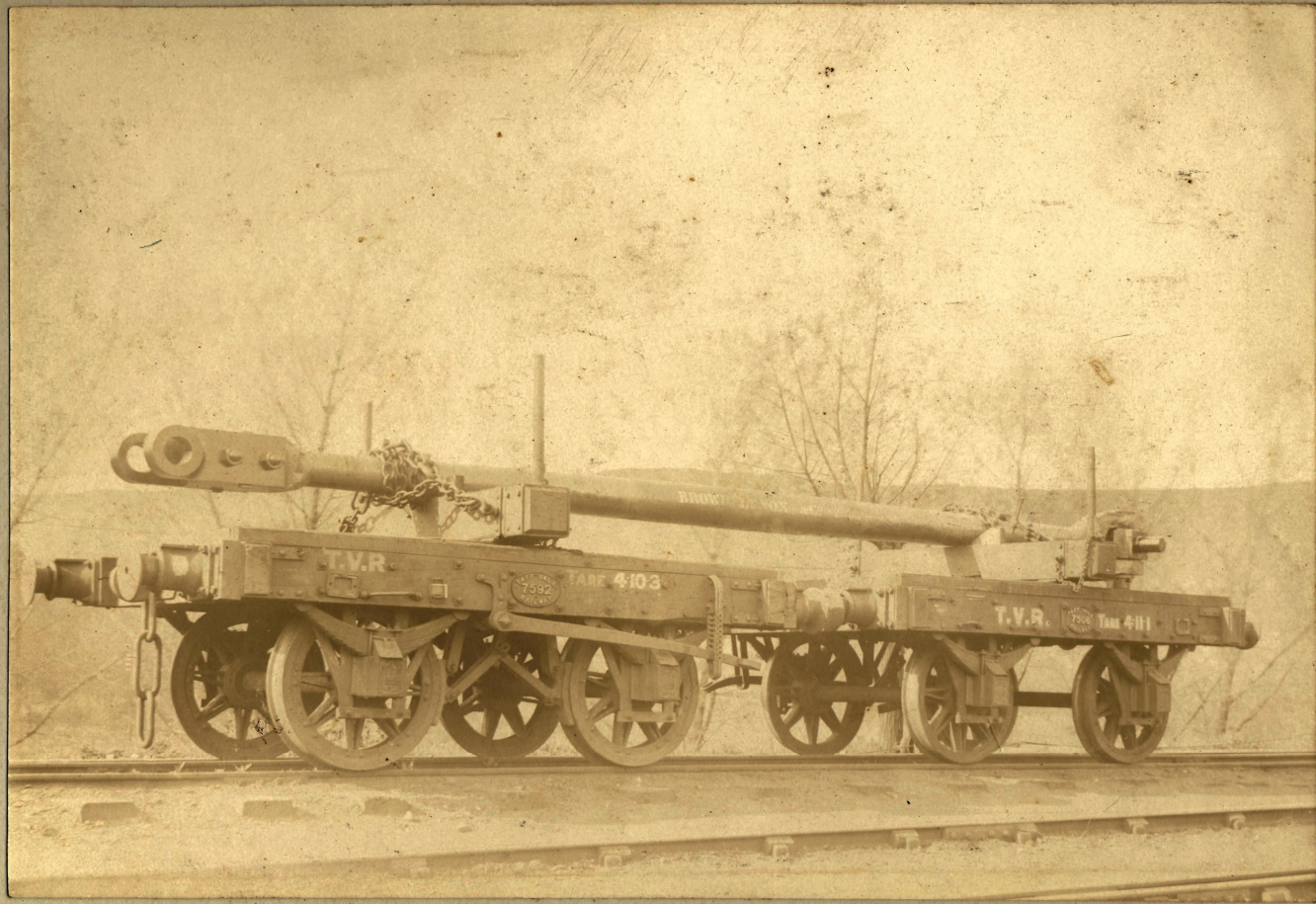


The Forge

Nº 3. Hammer

Working on a Part of London Hoisting-Screw.

— Large Connecting Rod —



Made for Barry Docks & Co.

Constructional Department.



*With Colliery Frames
in foreground.*

- Iron Foundry -

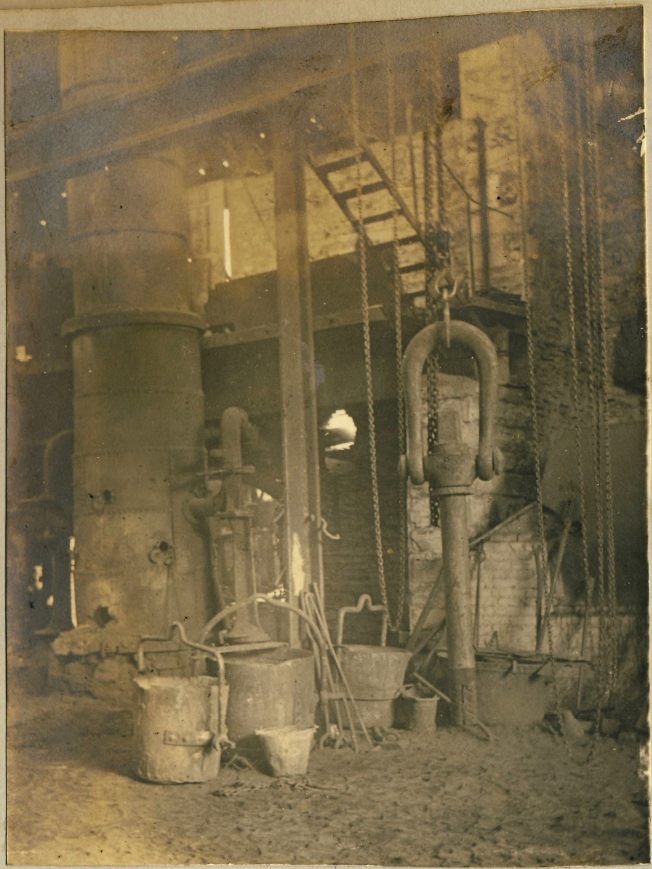


General View



In Use
at
Ipswich
Harbour
—
East London
S. Africa
—
Costa Rica
Central Am.
—
Calcutta
—
Benguela
India
—
Argentina
S. America

THE LENOX PATENT MOORING ANCHOR,



Showing method
of
Casting
crew head on to
a mooring screw.

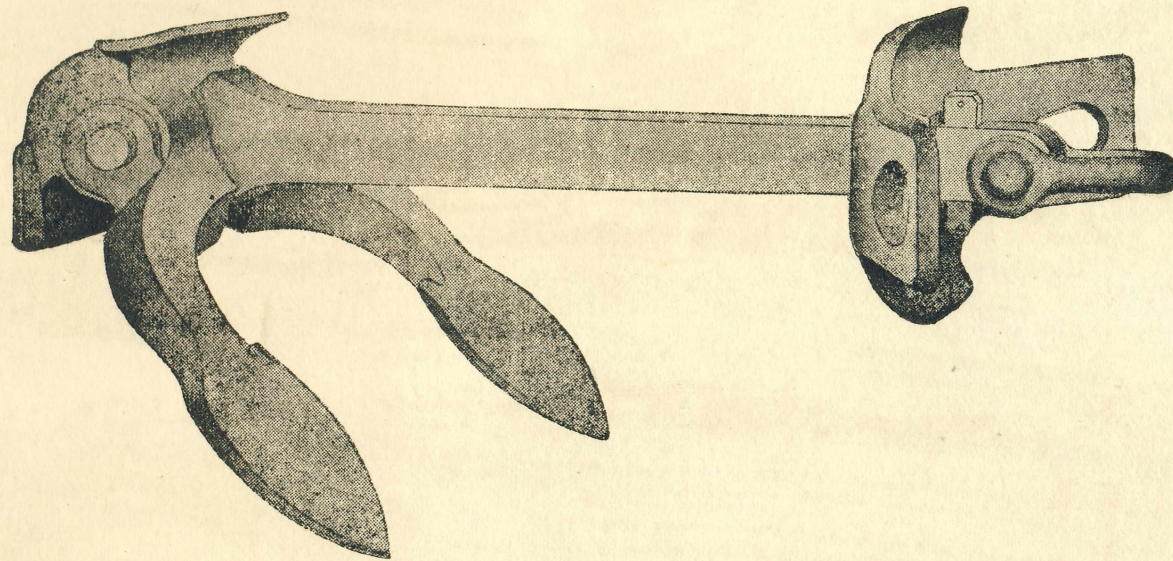


PATENT "ADMIRALTY" ANCHOR.

Brown, Lenox & Co., Patentees & Sole Makers,

— ESTABLISHED 1808. —

PONTYPRIDD, S. WALES.

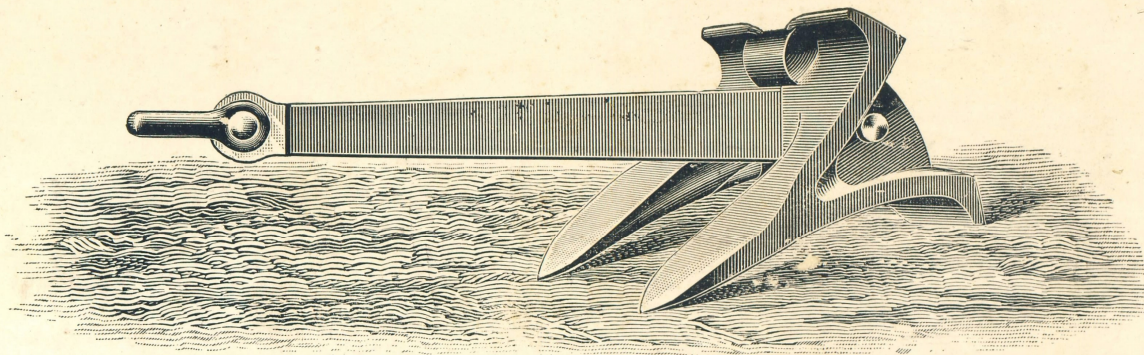


SIZES FROM 4 TO 115 CWT.

BROWN, LENOX & CO.,

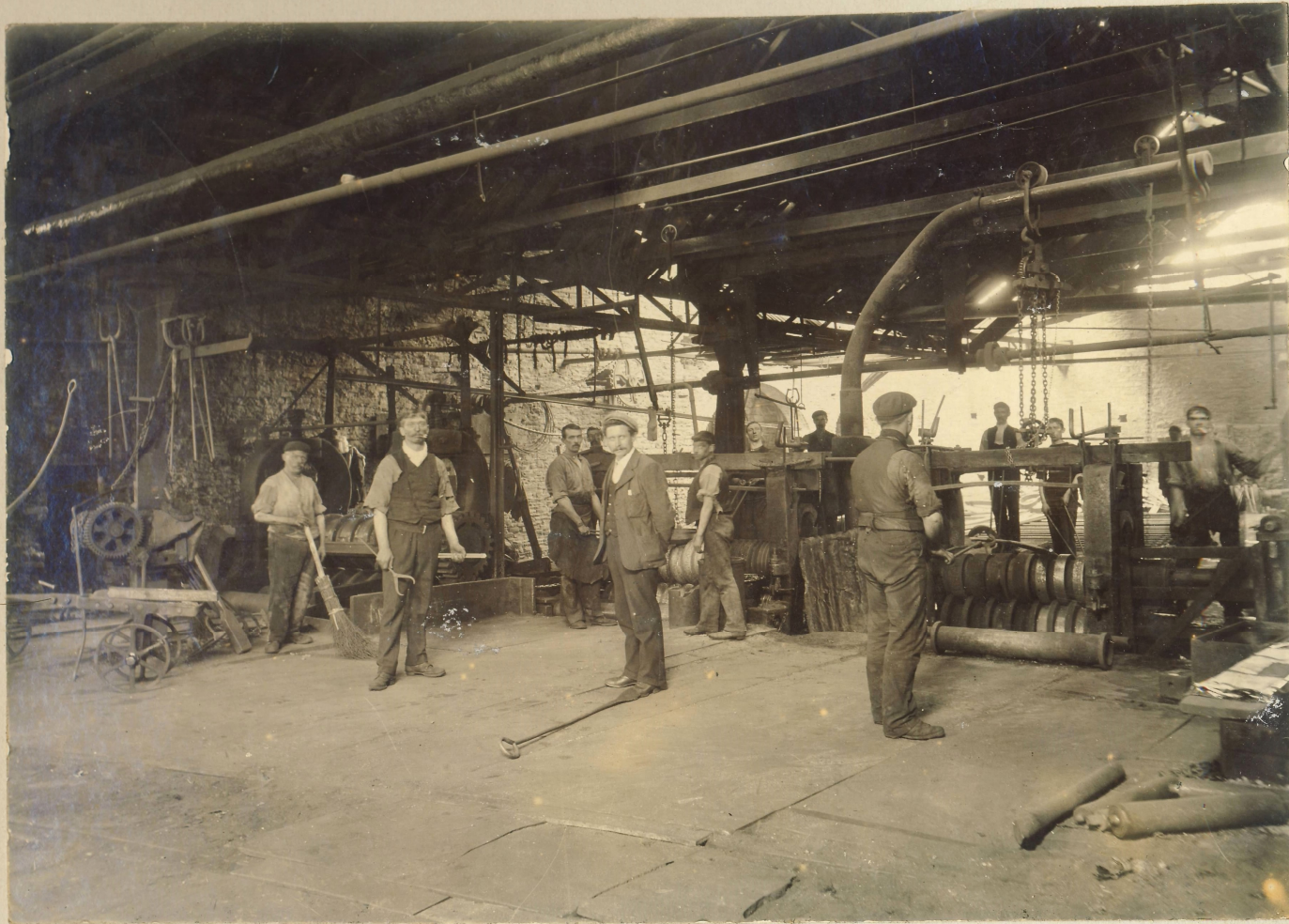
Established 1808.

Patentees and Sole Makers of the
“Wedge” Anchor.



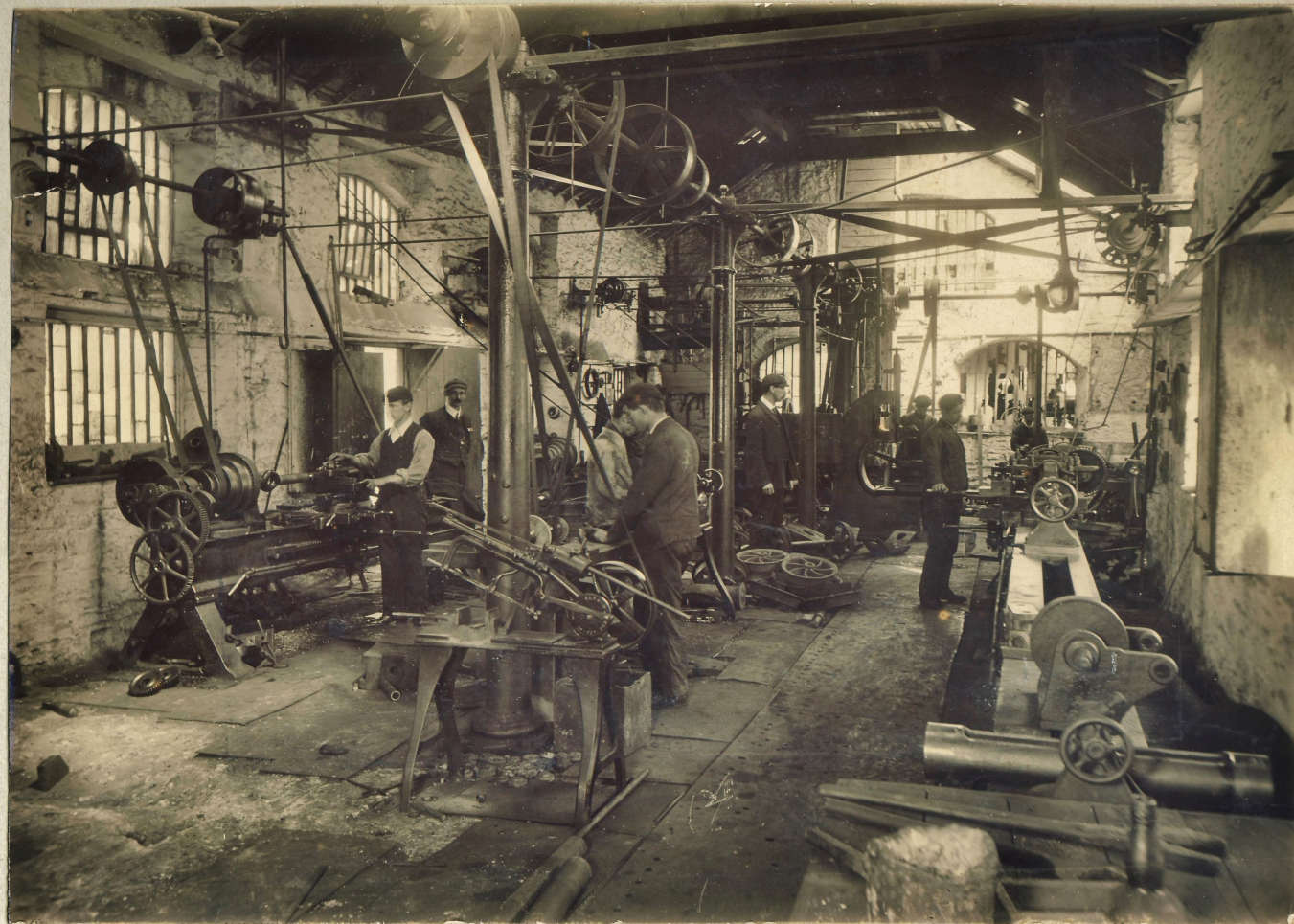
As supplied to the Imperial Russian and Japanese Governments.

↻ **Pontypridd, South Wales.** ↻

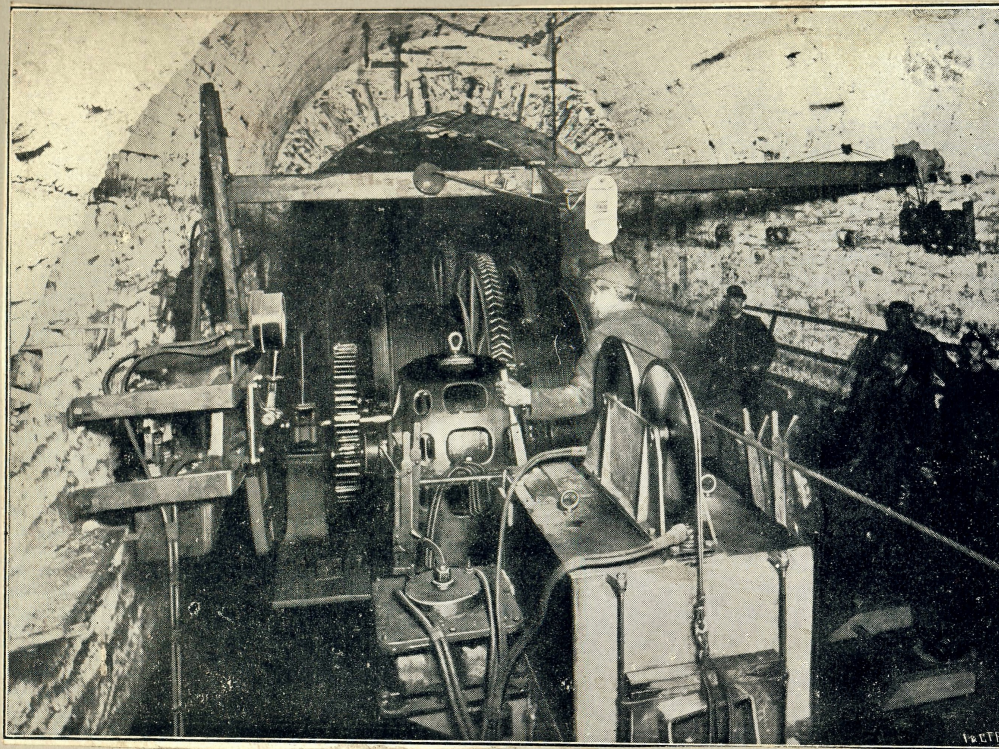


—Rolling Mill.—

- Small Machine Tool Shop -



From the "Iron and Coal Trades Review," July 14th, 1905.



This Haulage Gear was constructed by Messrs. Brown Lenox & Co., at their Pontypridd works to the order of Messrs. Watts, Watts & Co., for their Wattstown Colliery and is working most satisfactorily.

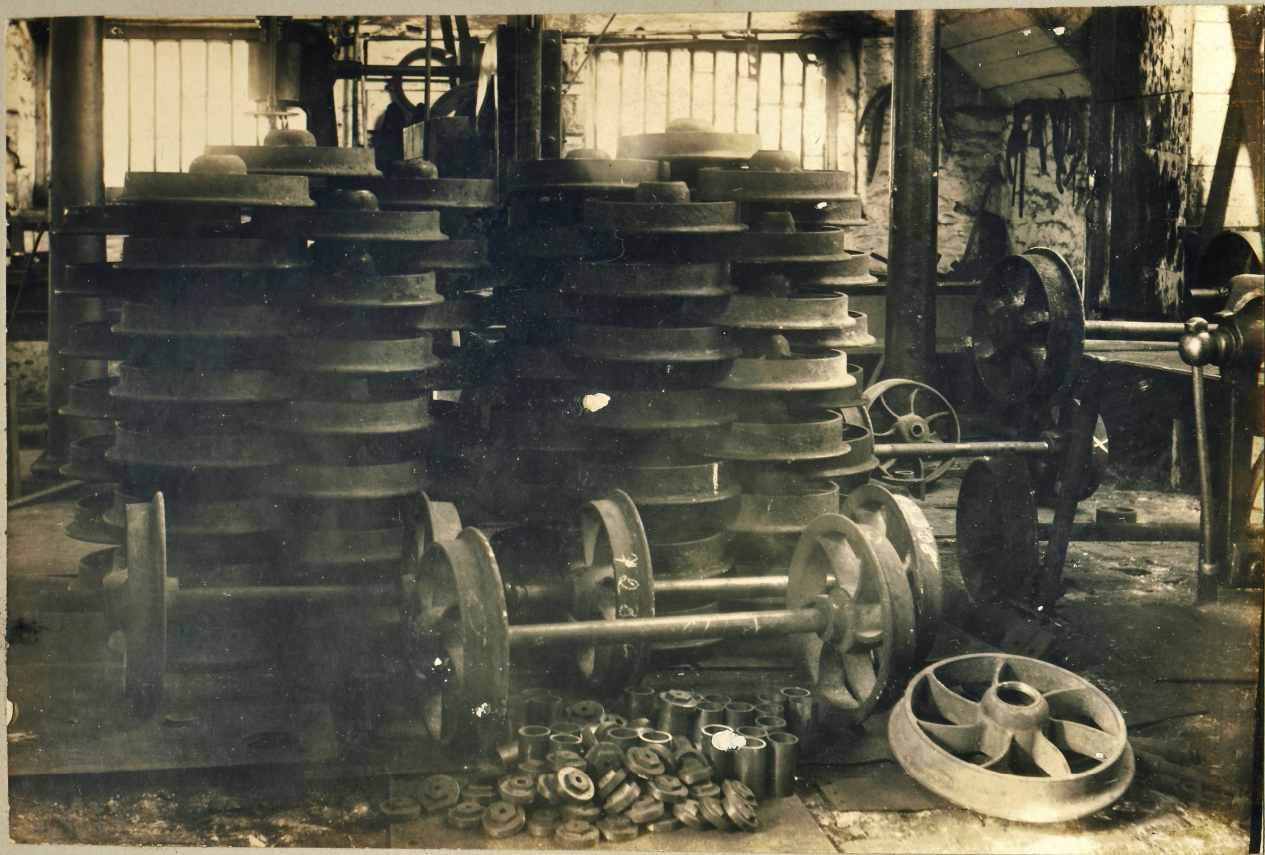


—Railway Spring Works.—





—Crucible Steel Foundry.—



Group of Cast Steel Wheels
for
Colliery Trams

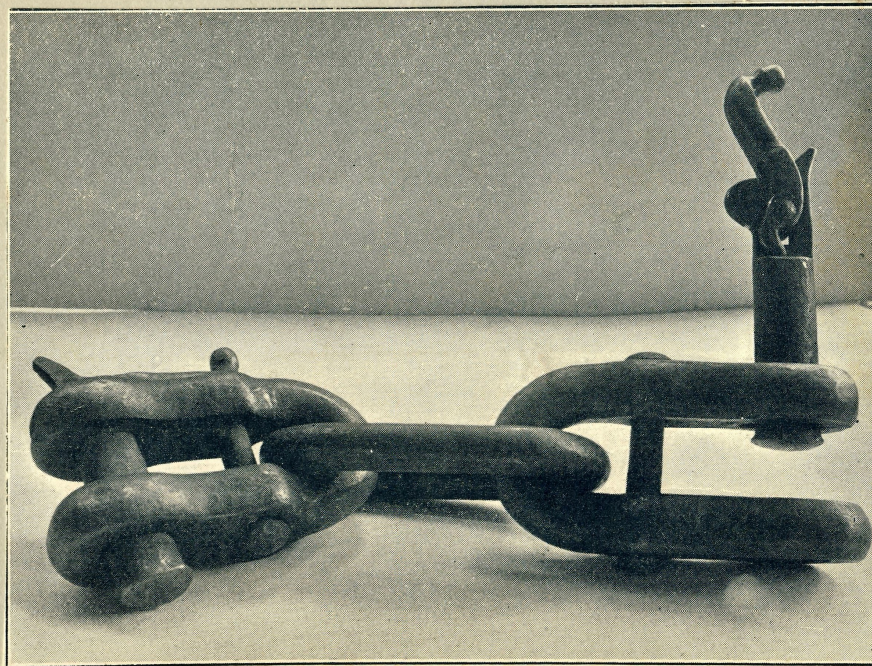


No. 1 Smiths' Shop.



Hydraulic Bending Machine,
for
Large Shackles, Links etc.

Colliery Tram Coupling



Swivels for Indian Government.



6" Iron—Test 140 Tons Tensile Strain.



12 cwt. each.



— Rail Shop. —

Large Hook
Tested to 45 tons
made for
Armstrong's
Elswick.

